

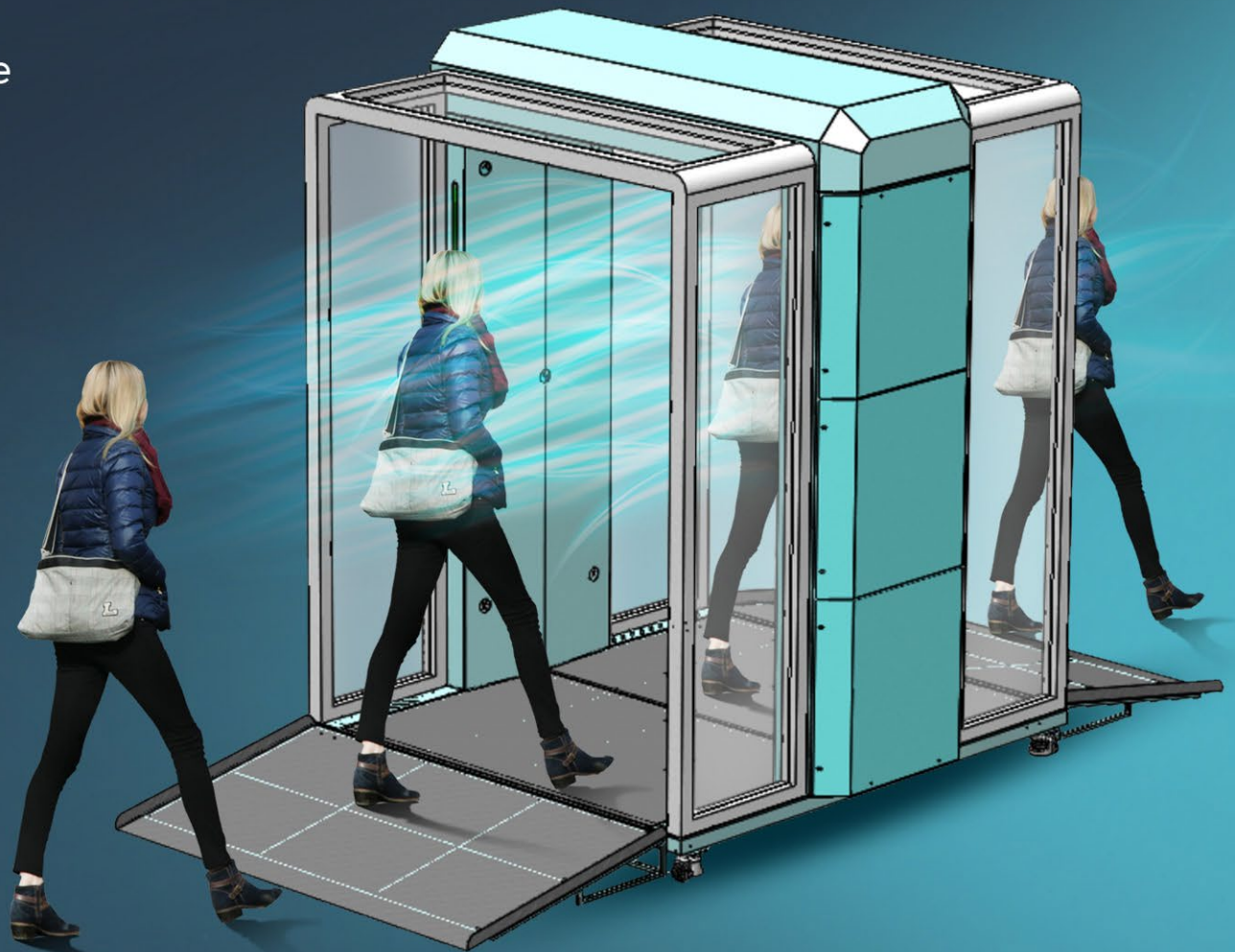


PURIFYING SPACES

The Next Generation of Effective, Safe, Bio-Sanitization

Sanitary Tunnel

Turn any commercial space into a safe space with our fully customizable full-body disinfection tunnel. Our innovative system easily sanitizes people and their items in seconds with just one step.



Ideal for high traffic areas such as:

- Airports
- Clinics
- Bus stations
- Schools
- Stadiums
- Salons
- Cinemas
- Hotels
- Supermarkets
- Food Factories
- Malls
- Offices
- Cars

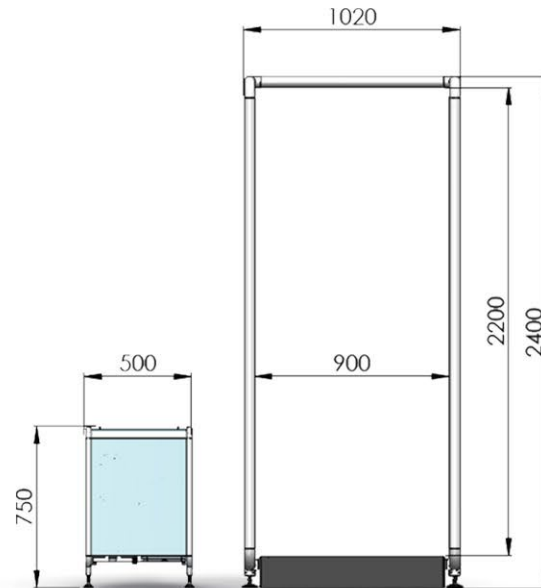
And more...



Tubular

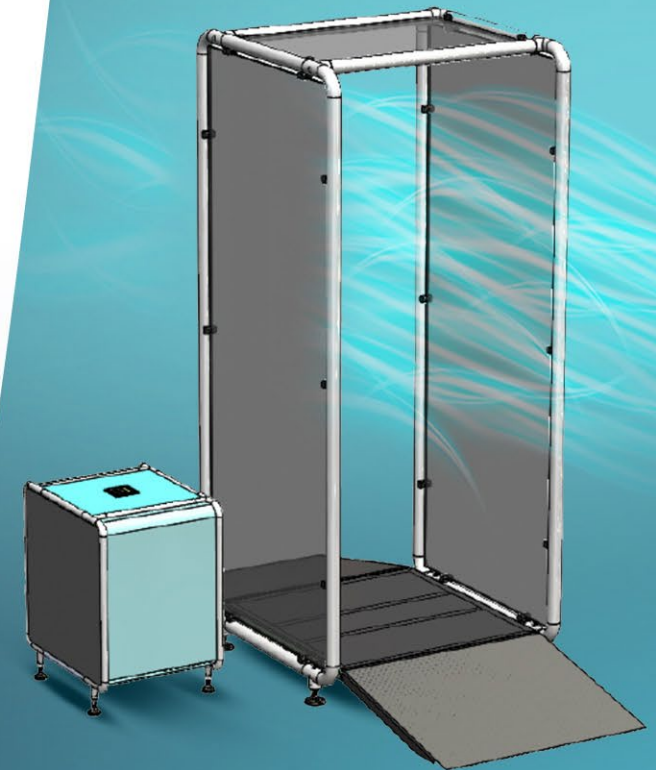
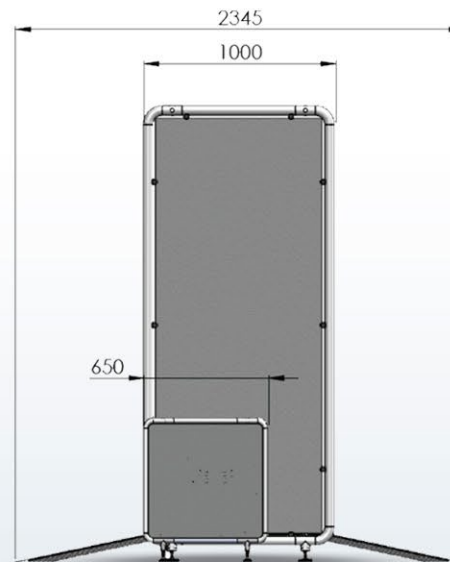
Tunnel Description:

- Transparent design with smallest layout.
- External operating unit.
- Can be dismantled for storage / transportation.
- Affordable solution.
- One person at a time disinfection.
- Operation triggered by motion sensor.
- Suitable for indoor use only.
- Stable base with levelers.



Sanitization System Description:

- Use electrolyzed water (EW).
- Active material is hypochlorous acid (HOCl)
- Array of 4 mist nozzles.
- Operated by 1 silent air compressor.
- Sanitation process of 7-10 seconds.
- Output of 100-200 person per hour.



99.99%
INSTANT BACTERIAL
& ODOR ELIMINATION

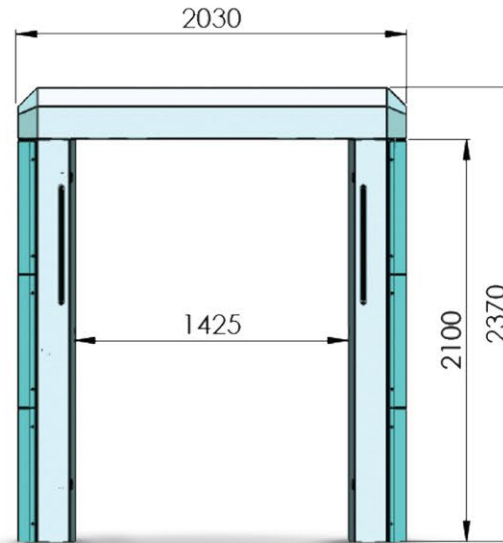
Small / Basic

Tunnel Description:

- Basic design with layout.
- One person at a time disinfection.
- Access is regulated by a traffic light.
- Operation triggered by motion sensor.
- Suitable for indoor use only.
- Floor mounting required.

Sanitization System Description:

- Use electrolyzed water (EW).
- Active material is hypochlorous acid (HOCl).
- Array of 6 mist nozzles.
- Operated by 1 built in silent air compressor.
- Sanitation process of 5-7 seconds.
- Output of 200-400 person per hour.



• COVID-19

• Candida albicans

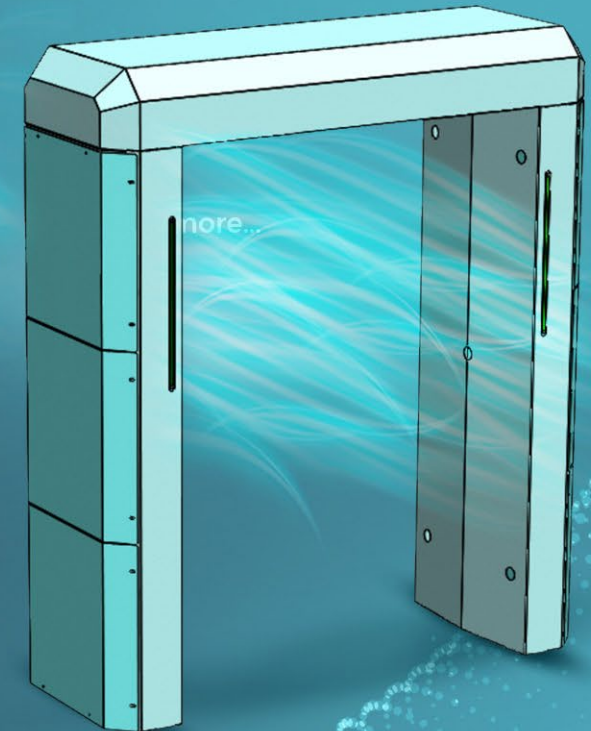
• Bacillus subtilis

• And more...

• Staphylococcus

• Salmonella

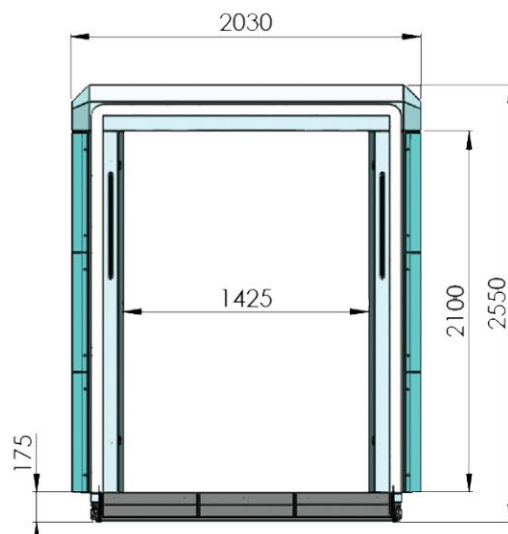
• E. coli



Medium / Standard

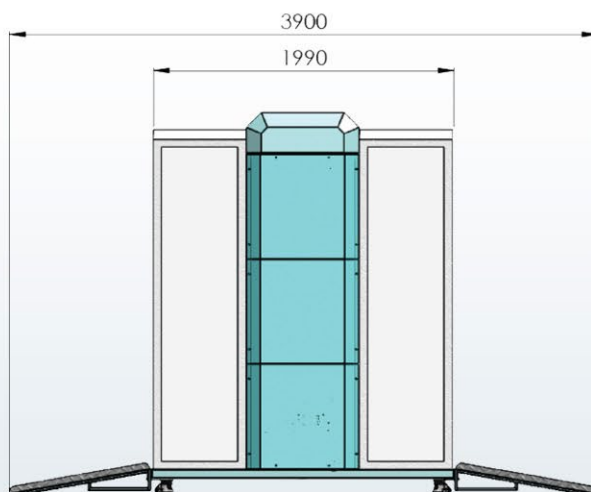
Tunnel Description:

- Standard design with medium layout.
- The best cost-benefit.
- One person at a time disinfection.
- Access is regulated by a traffic light.
- Operation triggered by motion sensor.
- Suitable for outdoor use.
- Transparent walls for user friendly experience.
- Stable base with wheels and levelers.
- Disabled access ramp.



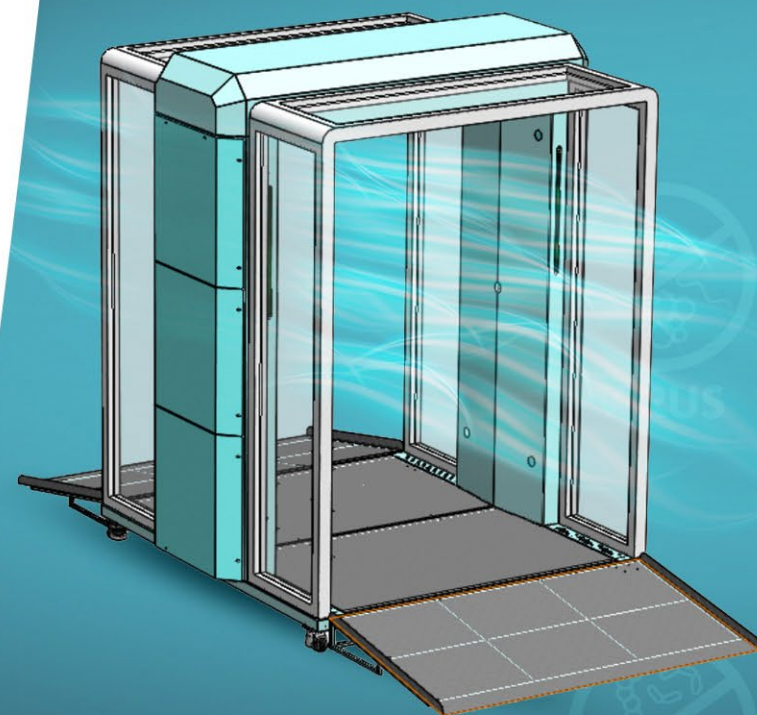
Sanitization System Description:

- Use electrolyzed water (EW).
- Active material is hypochlorous acid (HOCl)
- Array of IO mist nozzles.
- Operated by 2 built in silent air compressor.
- Sanitation process of 3 seconds.
- Output of 700-1200 person per hour.



Optional:

Autonomic sanitation production unit.



eco-friendly



COVID-19

US

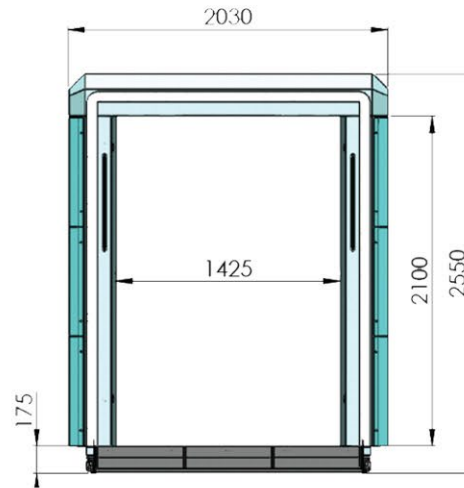


GERMS

Large / Premium

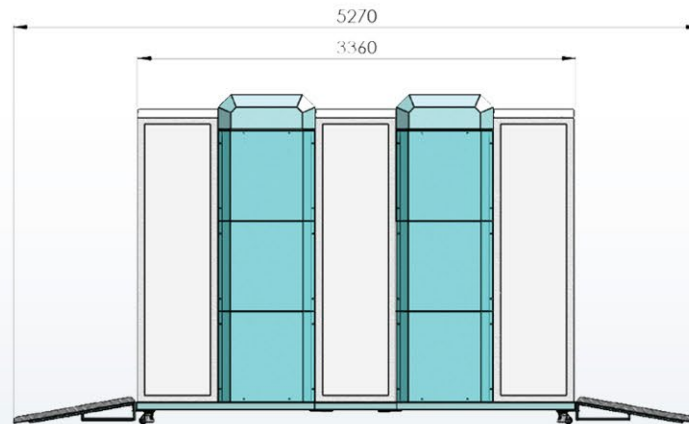
Tunnel Description:

- Premium design with extra long layout.
- Suitable for high traffic locations.
- Continuous disinfection.
- Operation triggered by motion sensor.
- Suitable for outdoor use.
- Transparent walls for user friendly experience.
- Stable base with wheels and levelers.
- Disabled access ramp.



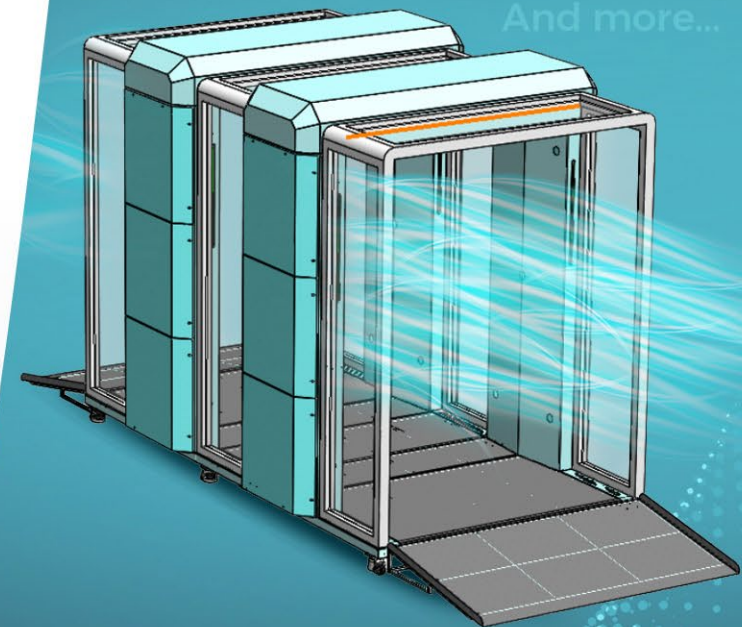
Sanitization System Description:

- Use electrolyzed water (EW).
- Active material is hypochlorous acid (HOCl).
- Array of 16 mist nozzles.
- Operated by 4 build in silent air compressor.
- Sanitation process – continuous.
- Output of up to 3600 person per hour.



Optional:

Autonomic sanitation production unit.



- TOTAL
TERMINATION
HUMAN
CORONA VIRUS
C43
SUPERBUGS
- Airports
 - Clinics
 - Bus stations
 - Schools
 - Stadiums
 - Salons
 - Cinemas
 - Hotels
 - Supermarkets
 - Food Factories
 - Malls
 - Offices
 - Cars
 - And more...

Additional options



**Temperature
detection**



**Mask
Detection**



**Face
recognition**



Entrance gate

In addition to entrance traffic light, a mechanical gates to control entrance



Wind curtains

Enclosure of inner space of a tunnel to avoid wind blowing out the mist and increase efficiency.



Communication system

Allow sent operation status to control center for maintenance, disinfectant supply and real time collecting of statistical information.



Routing system

A defined paths with a combination of gates to direct users allowed or not to pass using feedback from temperature, mask existence etc.



Magnometer

Build in magnometer to avoid entrance with weapons.

Full body disinfection.

Our 360 degree sanitation coverage covers all areas of the body, including those areas that are not directly exposed to the sanitation nozzles.

The material that we use does not cause irritation to the skin or the eye. Because we control the drop size and flow of the products, we ensure that the product will never go into the breeding system (what's a breeding system?).

Stable Water-Based Solution: A superior disinfectant agent due to its lack of chemicals.



Our Advantages

VS. our competitors



Non-Toxic & Non-Hazardous
pH <5.5 & less corrosive
Sodium Hypochlorite

Safe For People

Safe For The Environment



Stable Water-Based Solution

Superior disinfectant agent without all the chemicals



Non-Flammable

Alcohol & Chemical Free



Non-Corrosive



High Traffic with no bottlenecks



Suitable for indoor outdoor and any weather condition



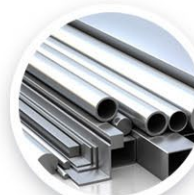
High Applicability including high-risk settings such as hospitals & food processing environments



Cost-effective



No additional sanitation is required.



Industrial standard materials that are made to last.



Low maintenance and reliable.

Summary

Feature	Tubular	Basic	Standard	Premium
Material	tainless steel / painted	tainless steel / painted	tainless steel / painted	stainless steel / painted
Transparent passage			V	V
Stationing	internal	internal	internal / external	internal / external
No. of nozzles	4	6	10	16
Operation	7-10 sec	5-7 sec	3 sec	continuous
Output	100-200 pph	200-400 pph	700-1200 pph	Up to 3600 pph
Prices	\$8,500	\$18,000	\$28,000	\$35,000
Motion sensor	V	V	V	V
Traffic light			V	V
Temp. detection	\$2,500	\$2,500	\$2,500	\$2,500-\$10,000
Autonomic sanitation production unit.			optional	optional
Mask detection	optional	optional	optional	optional
Face recognition			optional	optional
Entrance gate			optional	optional
Routing system			optional	optional
Wind curtain			optional	optional
Magnetometer	optional	optional	optional	optional
Communication system				



Our Water

WHAT IS HOCL and why its the best solution for our tunnles:

HOCl is a natural part of our internal defense system, produced by white blood cells. When produced outside the body, HOCl is an electrolyzed, antimicrobial, biocide solution that inactivates pathogens such as bacteria, viruses, spores, and fungi.

- Works to fight infection, control responses to injury, and enhance healing
- Part of the healthy response to injury and recovery
- HOCl consistently shows no adverse effects
- Will not irritate or aggravate tissue damage at wound sites
- Safe for use on humans and animals


HOCL: Real science in the human body

Harmful pathogens, such as bacteria, spores and viruses, can be found all around us – in the air, on food, plants, animals, and on inanimate surfaces. The human body uses innate, non-specific mechanisms as the first line of defense against pathogens, infection and injury. The skin itself, and mucous secretions at epithelial membranes, are both important elements of the innate resistance response. But when these are breached, HOCl is immediately generated by the body in response as the key chemical component of innate immunity.

The goal of use

Prevention of spreading infectious disease by using, available and simple to use disinfectant solution which contains very low amount of active material, and therefore, is not harmful to the environment.

The active material concentration is extremely low (0.0005-0.02% w/w) which is significantly lower compared to other available disinfectants products (bleach, alcohol, chlorohexidine) which makes this product extremely safe and therefore, this material can be applied frequently in the presence of people, thing that strategy will lower the chances of virus spreading.





RD Pack

Hamelacha 14, Karmiel, 2165187 Israel

Web site: www.rd-pack.co.il

Email: eran@rdpack.co.il

Phone : +972 50 7717669

